



rcFoamFighters
Bloody Micks Squad
FF-18 Basic Template

(Design by Jon McCarty - July 2010 - Rev 1.3)

(CAD Drawing by Jon McCarty - July 2010)

(Basic Template Release 1.0)

(Copyright, Bloody Micks rc July 2010)
(Please Visit Our Site at: <http://bloobymicks.com>)
(Contact Bloody Micks RC at: sales@bloodymicks.com)

rcFoamFighters

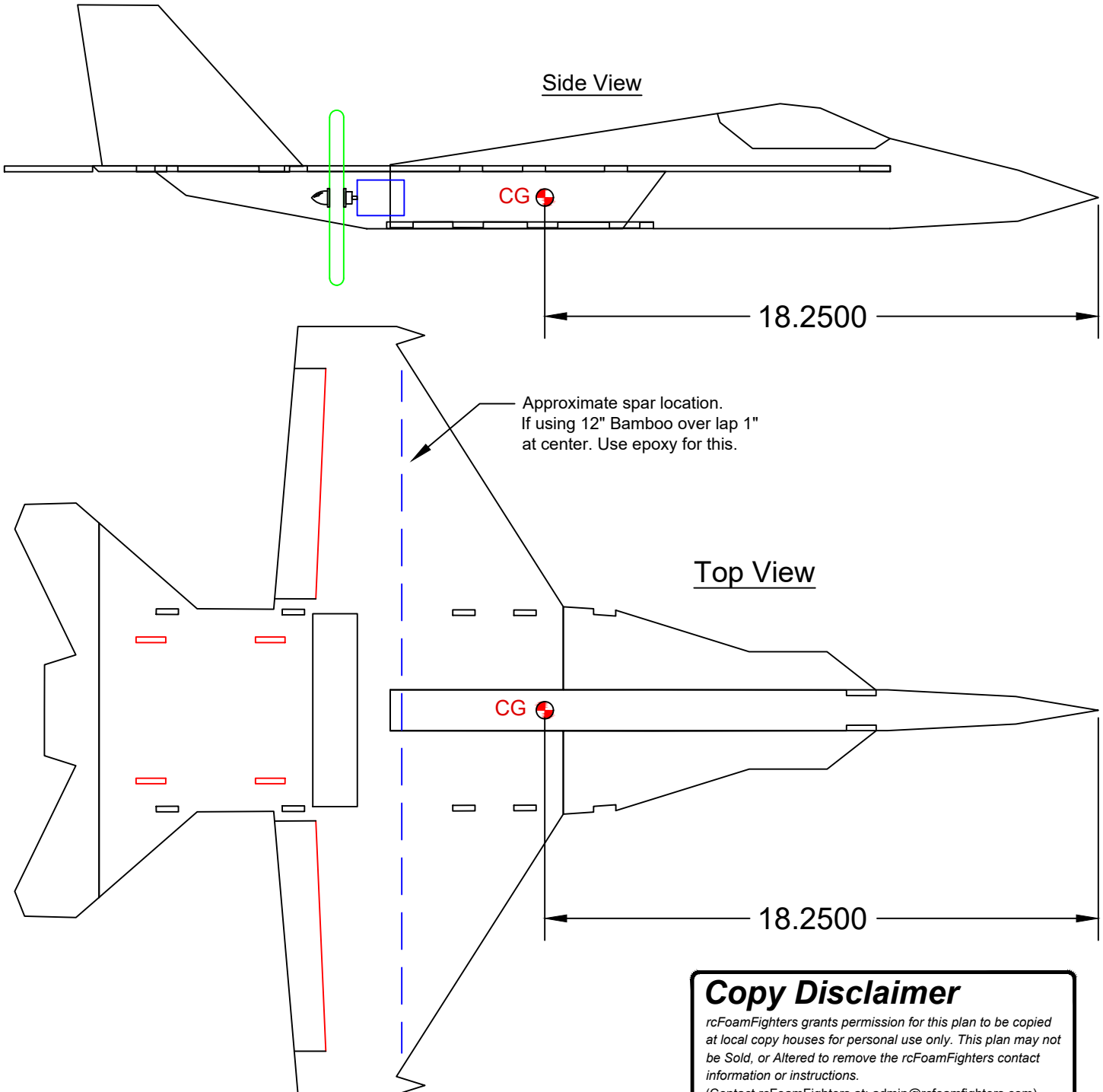
FF-18 Basic Template

(Design by Jon McCarty - July 2010 - Rev 1.3)
(CAD Drawing by Jon McCarty - July 2010)
(Basic Template Release 1.0 - Copyright Bloody Micks rc)
(Contact Bloody Micks rc at: sales@bloodymicks.com)
(Please Visit Our Site at: <http://bloodymicks.com>)
(Copyright, Bloody Micks rc July 2010)

Basic Specs as built by rcFoamFighters:

Wingspan: 25.88 Inches (65.74cm)
Length: 36.7 Inches (93.22cm)
All Up Weight (AUW): 25oz. (708.75 gms) with Basic Setup

Note, weight and top speed may vary depending on materials, motor, battery and electronics used. The weight given here is based on the model Jon of the rcFoamFighters Bloody Mick's Squad made using Foam Board Covered in colored sealing tape.



Copy Disclaimer

rcFoamFighters grants permission for this plan to be copied at local copy houses for personal use only. This plan may not be Sold, or Altered to remove the rcFoamFighters contact information or instructions.
(Contact rcFoamFighters at: admin@rcfoamfighters.com)

RECOMMENDED PARTS:

BASIC OPTION

Motor: Grayson Hobbies 2212-06
ESC: 30A ESC
Battery: 1300mAh 3s
Prop: APC 6x4
Servos: 3 Each Metal Gear
Radio & Receiver: Any 4-ch or better (2.4ghz preferred)

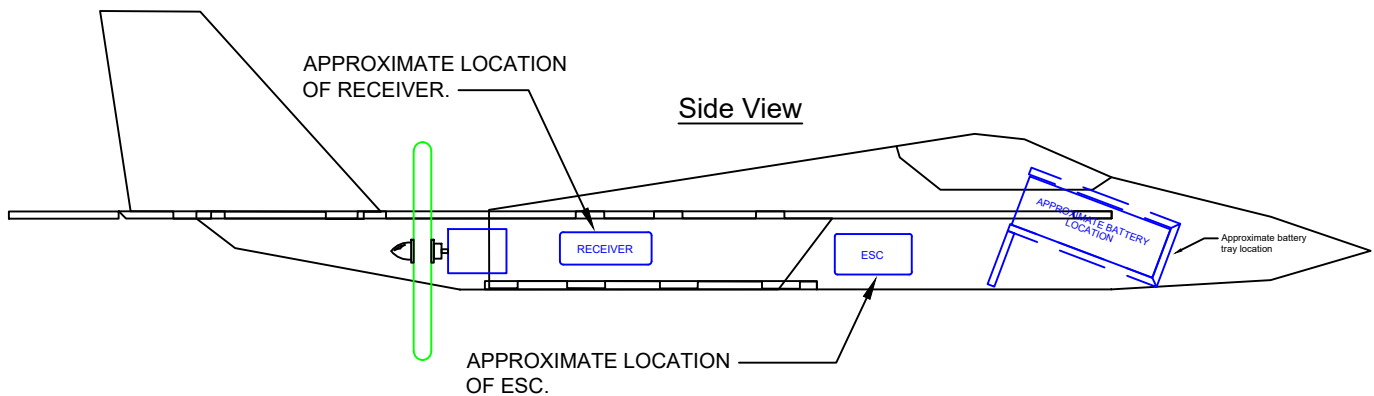
PERFORMANCE OPTION

Motor: Turnigy 2836 2350kV
ESC: 35A ESC
Battery: 2200mAh 3s
Prop: APC Sport 6x4
Servos: 3 Each Metal Gear
Radio & Receiver: Any 4-ch or better (2.4ghz preferred)

Plane was originally designed to be made from 3ea 20x30 Sheet of Foam Board. Foam was then covered colored carton sealing tape. Other materials than Foam Board may be used, but additional carbon fiber or wood spars may be required.

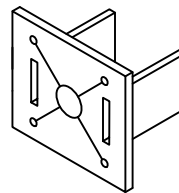
Disclaimer (Please Read):

- This is a design template for a high performance, high speed RC aircraft. This plane should only be built and flown by experienced pilots with adequate skill to fly fast, maneuverable planes.
- **DO NOT fly this plane where it can endanger people, livestock or property.**
- **ANY PERSONS DECIDING TO BUILD AND FLY THIS PLANE DOES SO AT HIS/HER OWN RISK AND LIABILITY. RCFOAMFIGHTERS ASSUMES NO RESPONSIBILITY FOR THE PERFORMANCE OF THIS PLANE.**
- This plane should only be launched via the side launch method. Do not attempt to launch from the top or bottom of the fuselage. Doing so can cause **EXTREME BODILY HARM** if any hand or body part comes into contact with the fast spinning propeller.
- All minors should fly under the supervision of an adult or guardian.

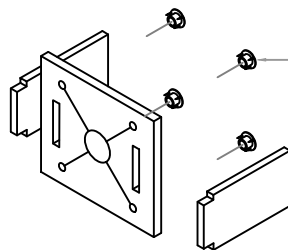


ASSEMBLY OF LASER CUT MOTOR MOUNT (MADE FROM 1/8" PLYWOOD)

ASSEMBLE AS SHOWN.
USE EPOXY OR OTHER
ADHESIVE TO GLUE
TOGETHER.



ASSEMBLED VIEW



EXPLODED VIEW

INSERT 4 EACH, 4-40 BLIND NUTS
INTO BACK OF MOTOR MOUNT
PLATE. INSURE HOLE PATTERN IS A
MATCH TO THE MOTOR TO BE USED.
(USE 4 EACH 4-40 MACHINE SCREWS
TO SECURE MOTOR TO MOUNT.)

***NOTE* BLIND NUTS MUST BE
INSTALLED FIRST. BEFORE GLUING
SIDE PLATES IN.**

TEMPLATE ASSEMBLY KEY PLAN

rcFoamFighters

Bloody Micks Squad

FF-18 Basic Template

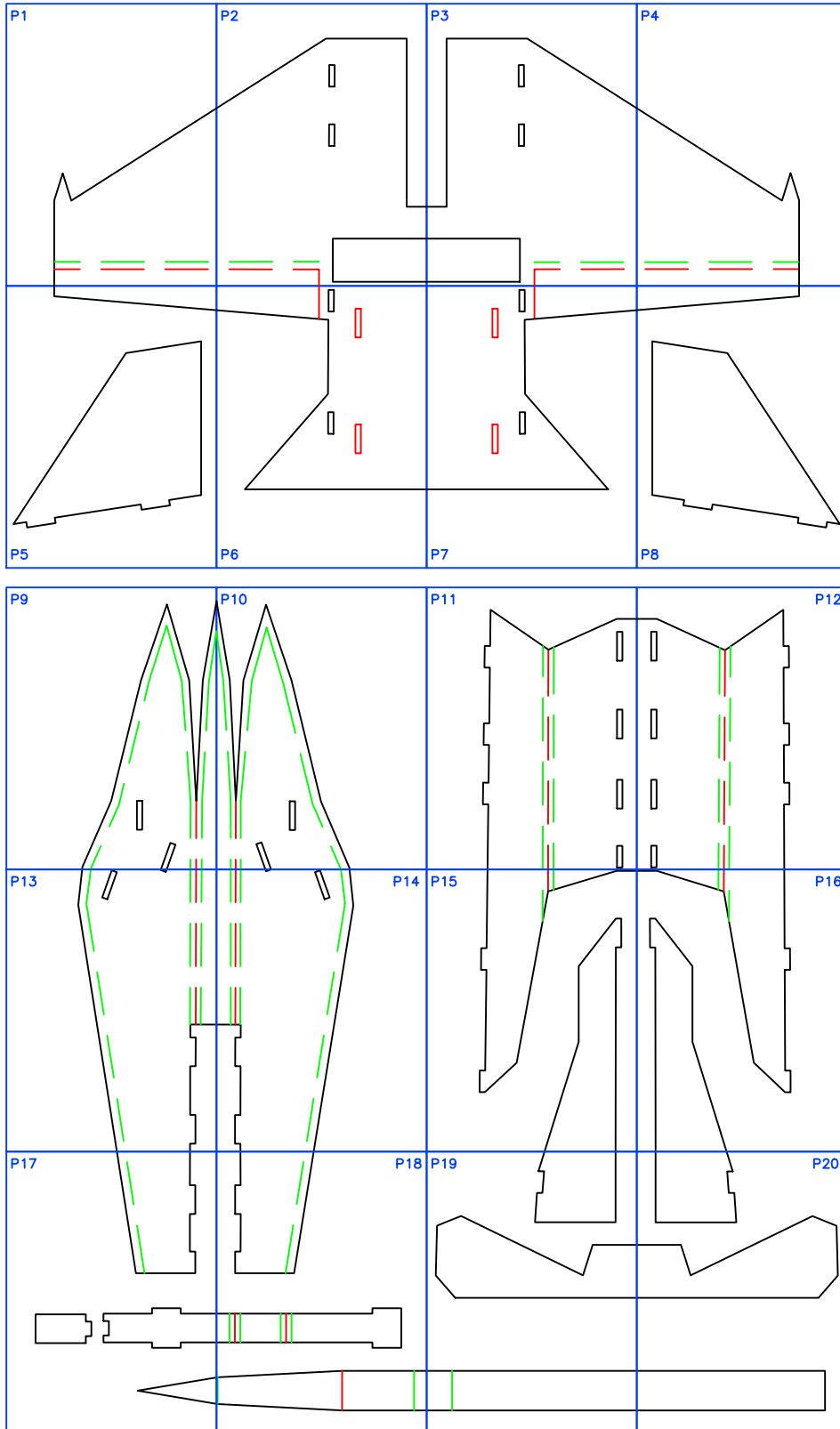
(Design by Jon McCarty - July 2010 - Rev 1.3)

(CAD Drawing by Jon McCarty - July 2010)

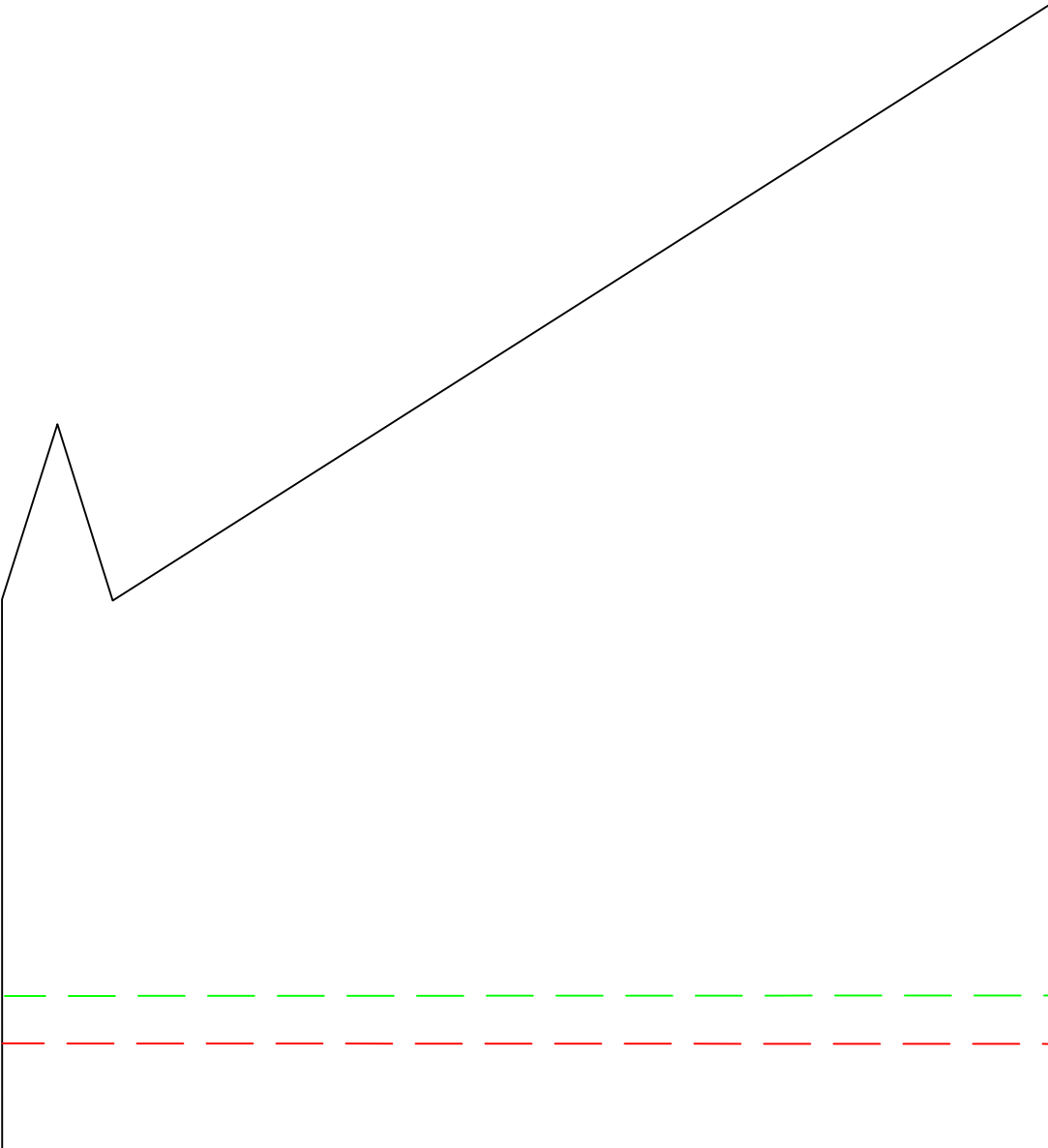
(Basic Template Release 1.0 - (Copyright, Bloody Micks rc July 2010))

INSTRUCTIONS:

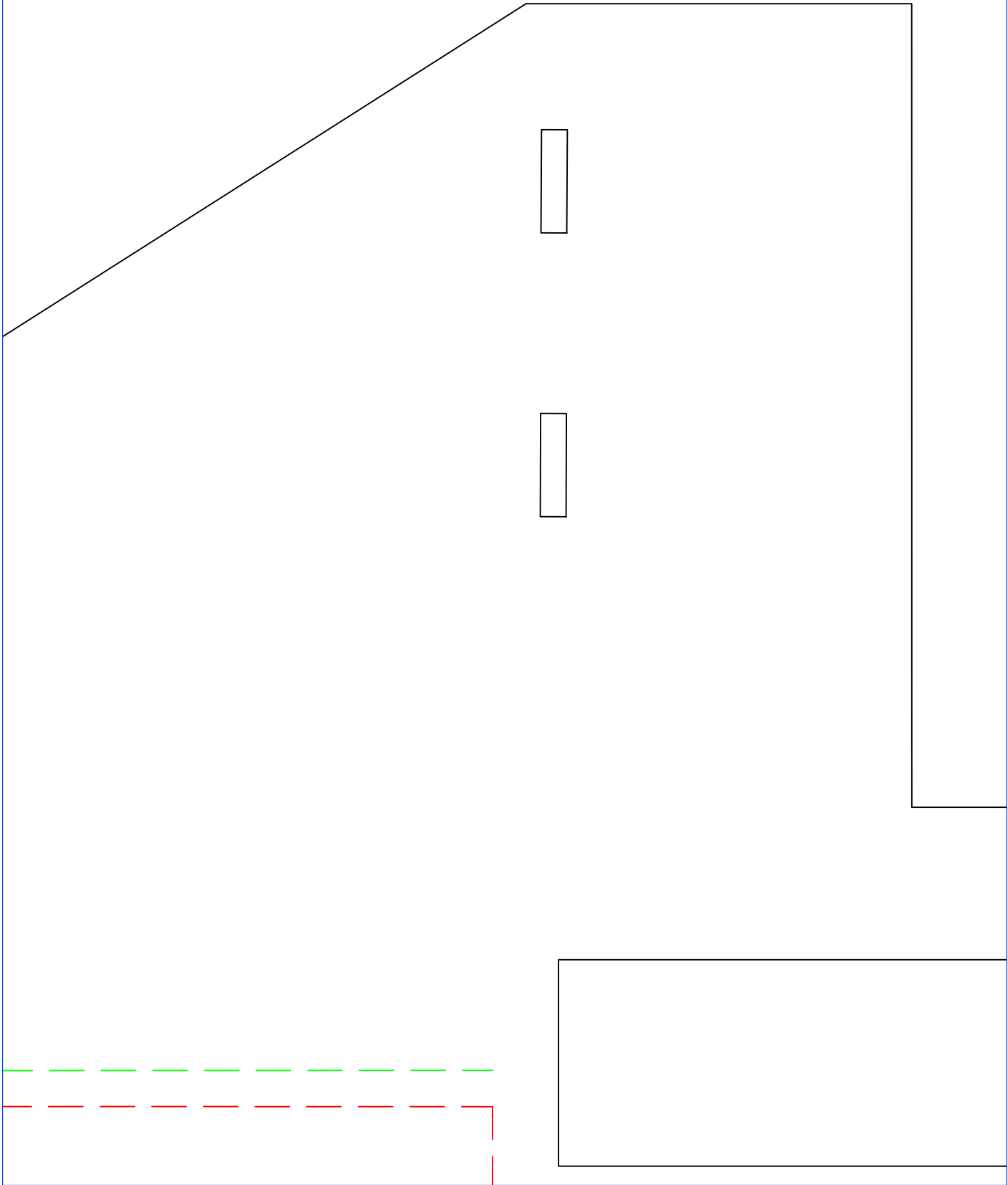
PRINT ALL TEMPLATE SHEETS. CUT AND ASSEMBLE AS SHOWN BELOW. USE SCOTCH TAPE TO SECURE SHEETS TOGETHER.



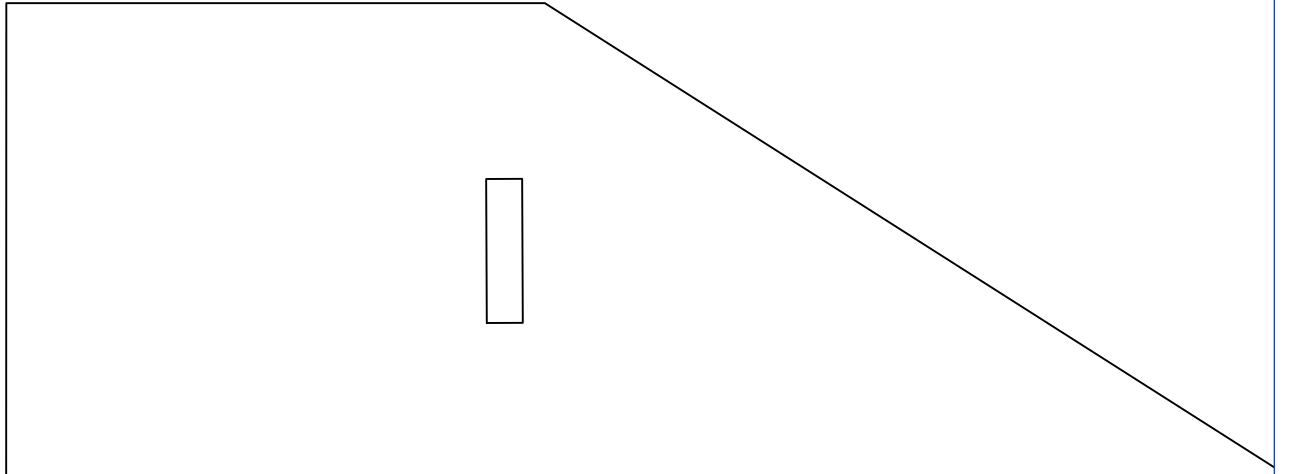
P1



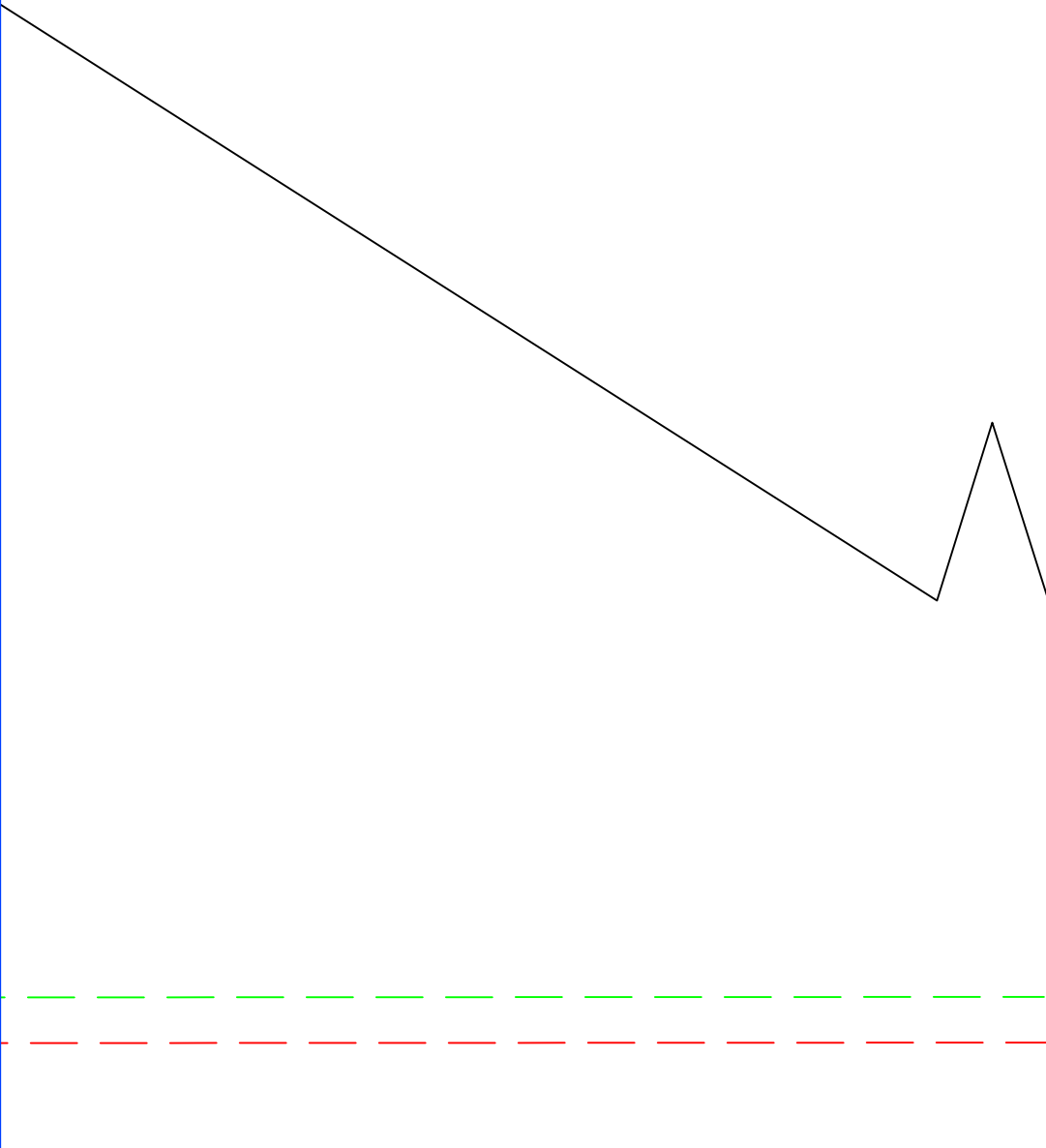
P2

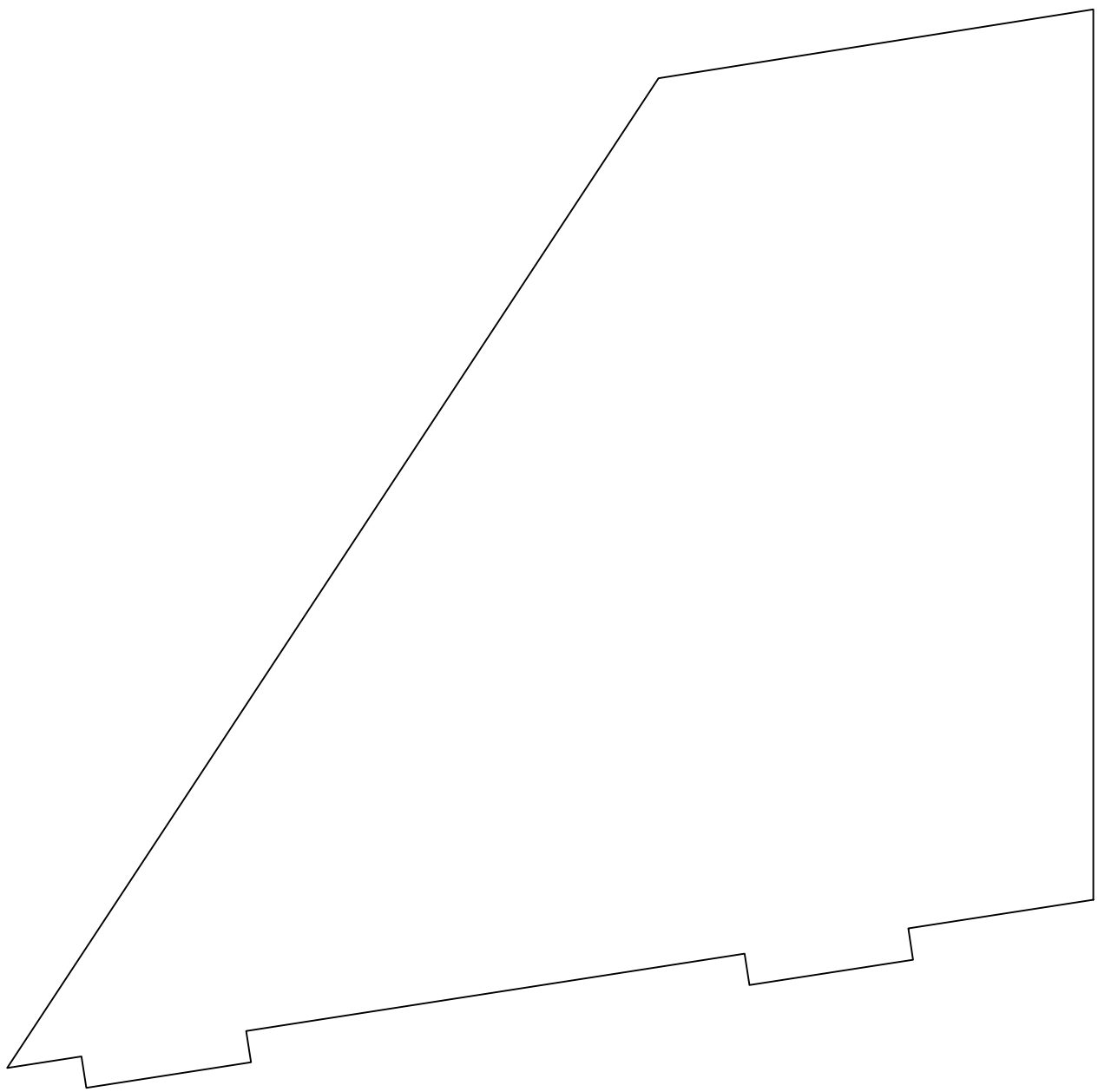


P3

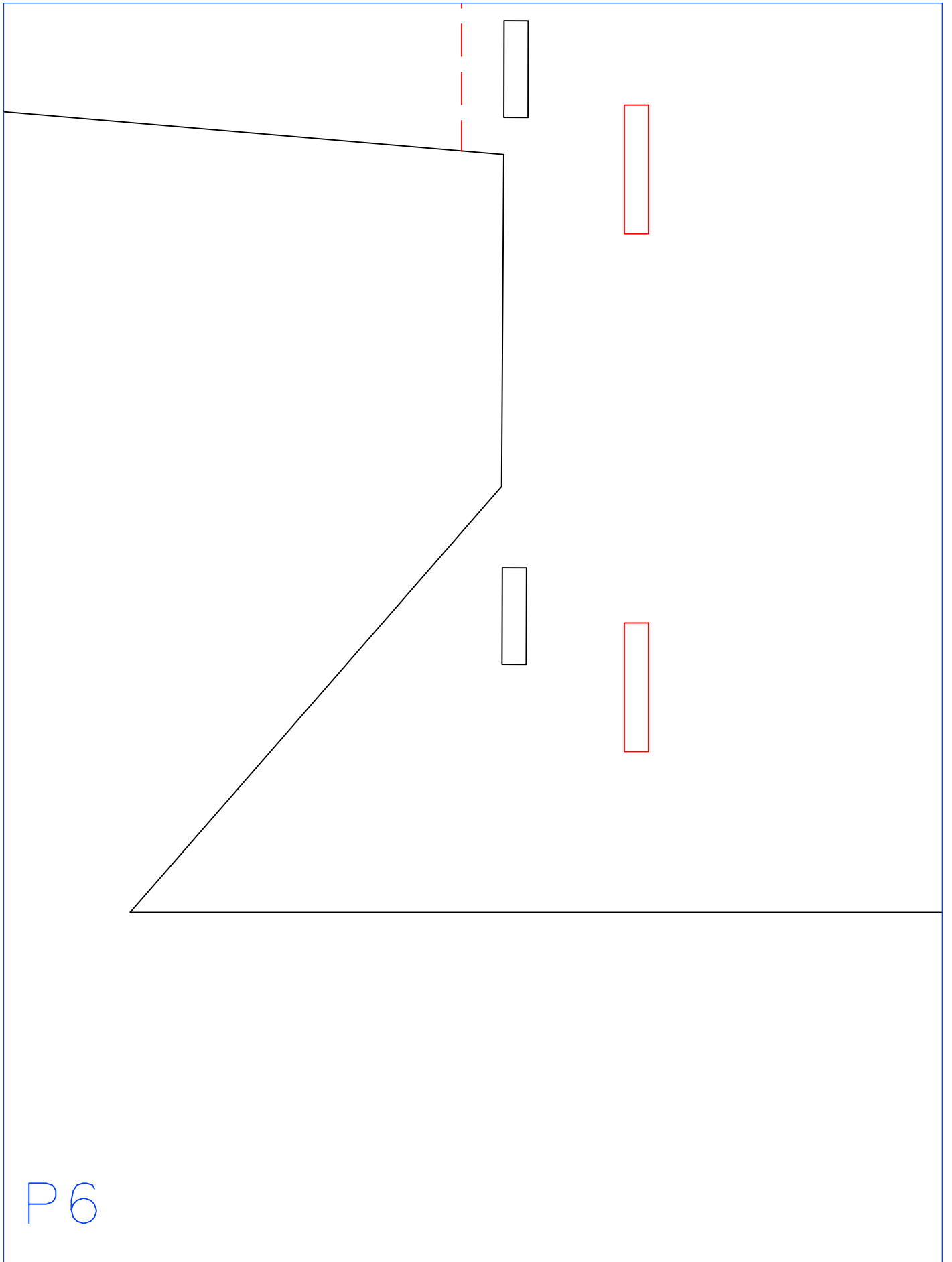


P4

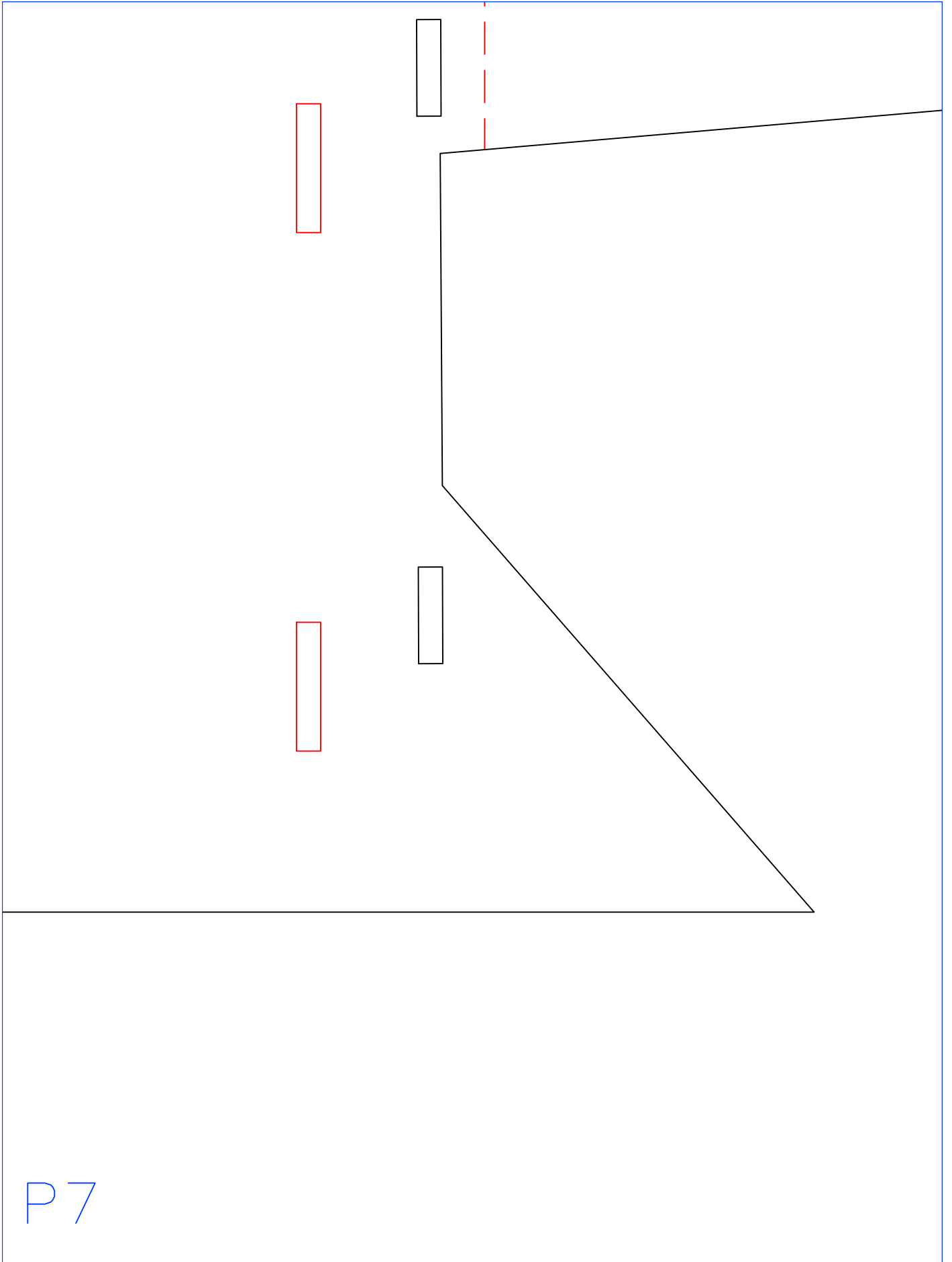




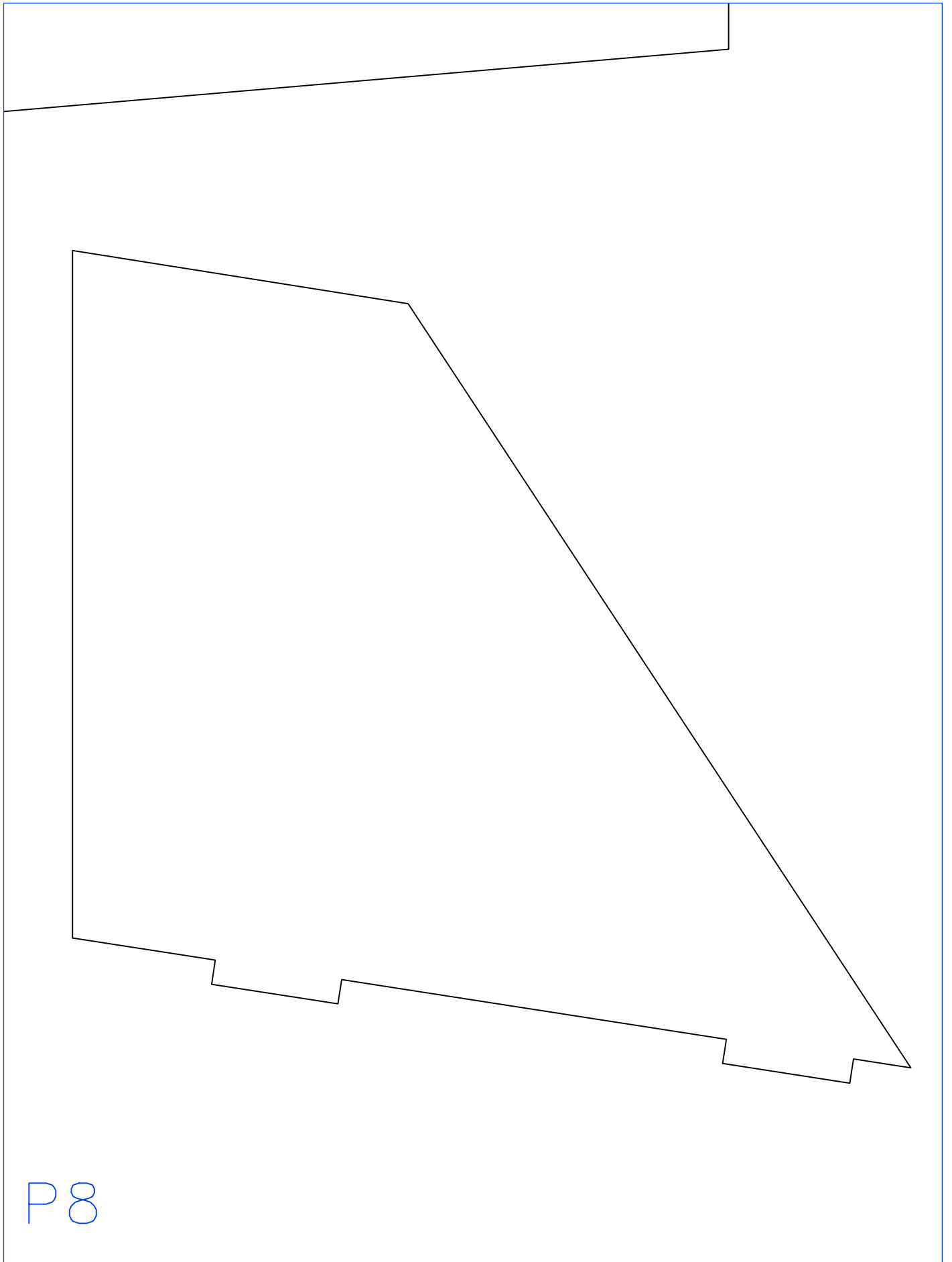
P5



P6

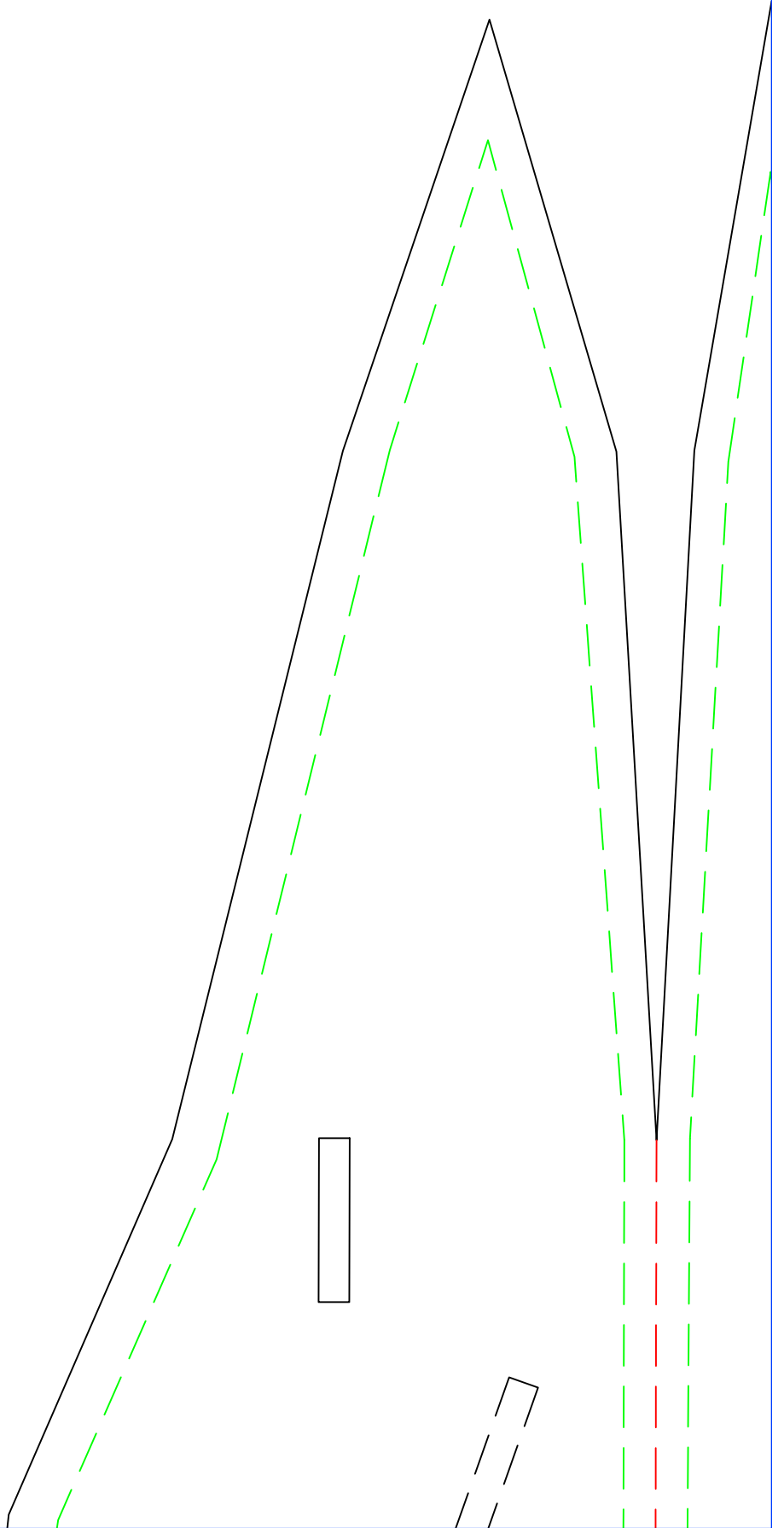


P7

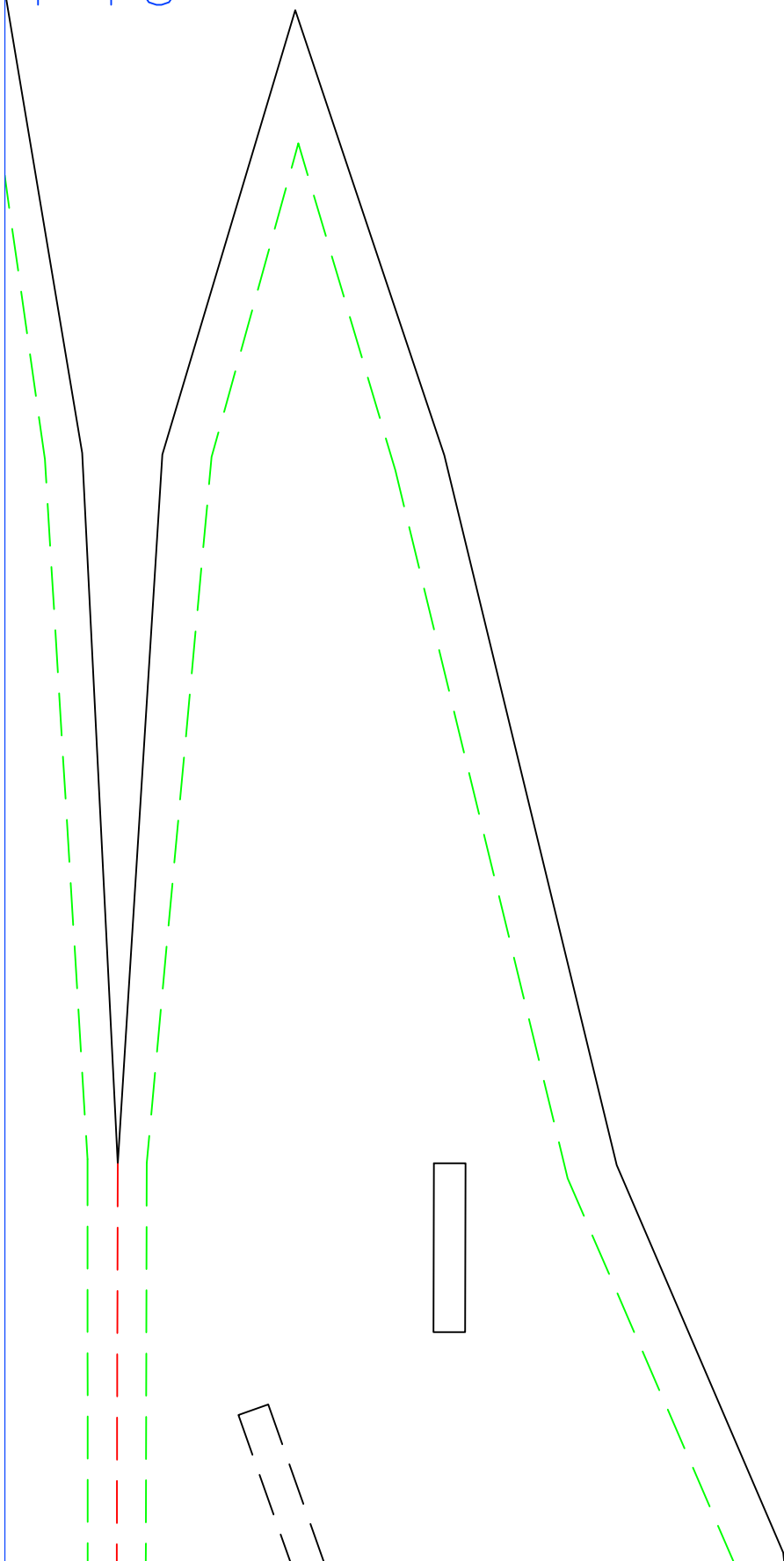


P8

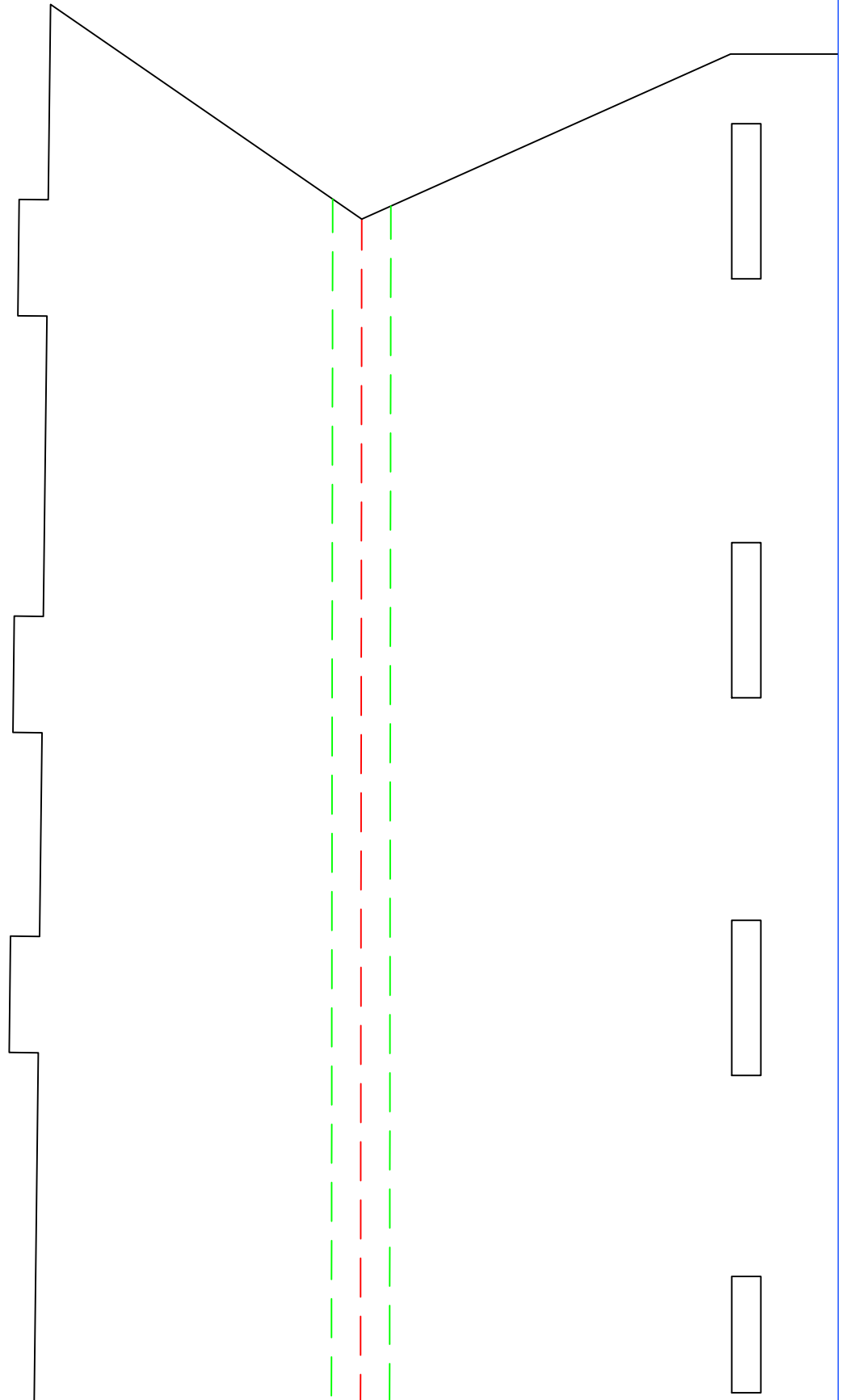
P9



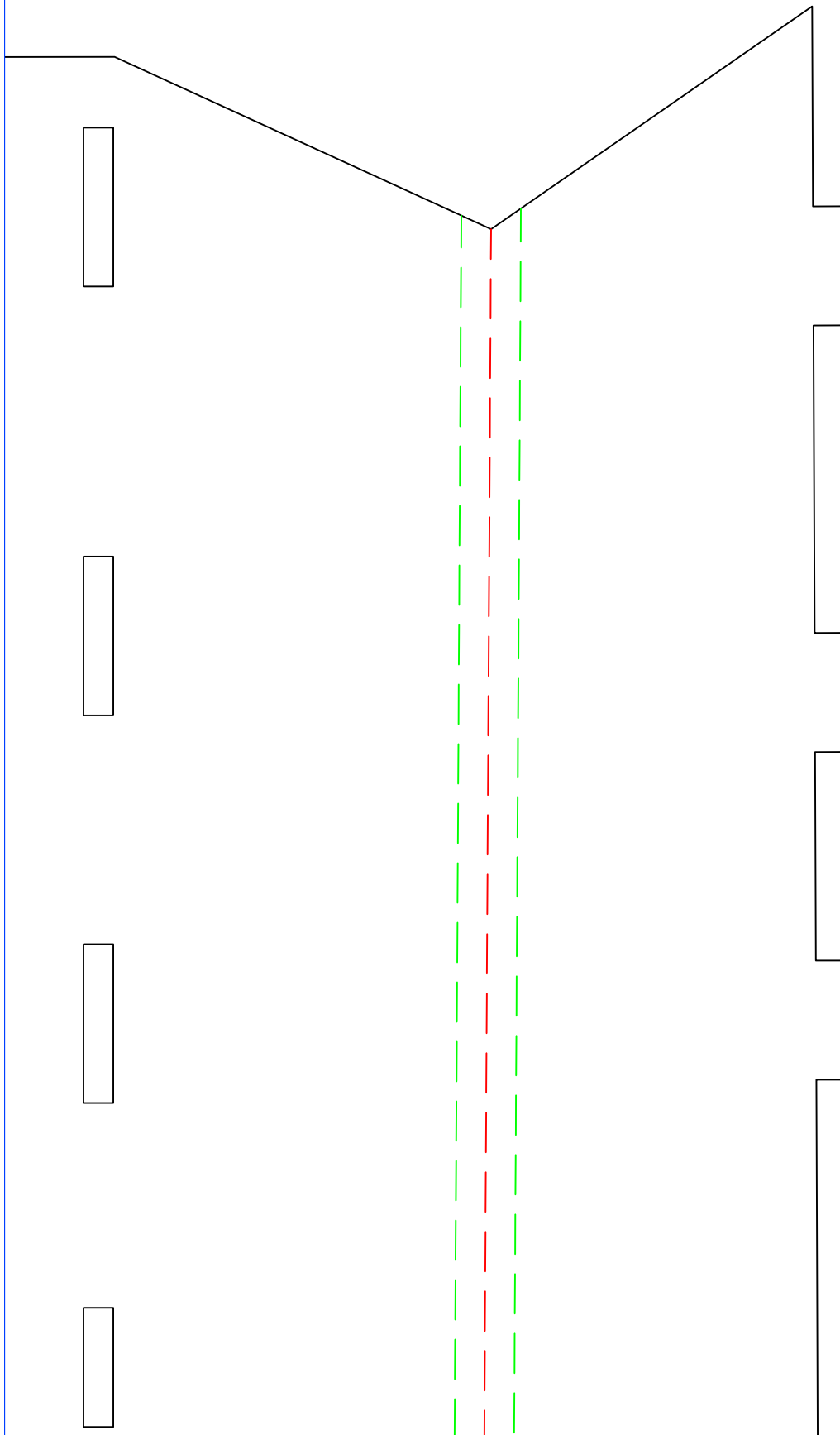
P 10



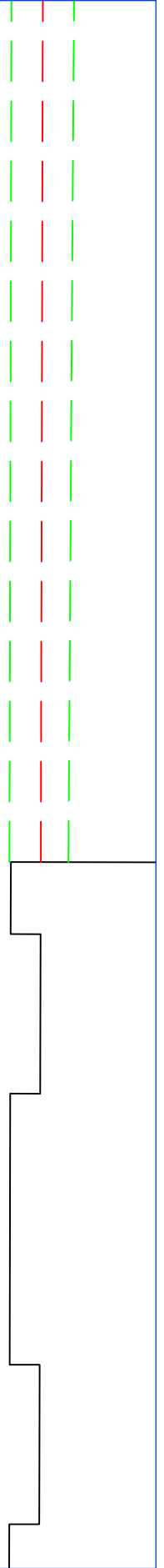
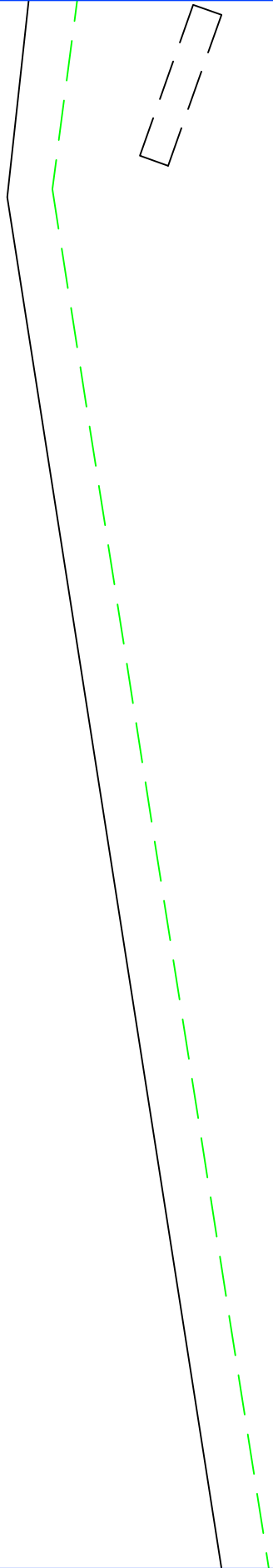
P 11



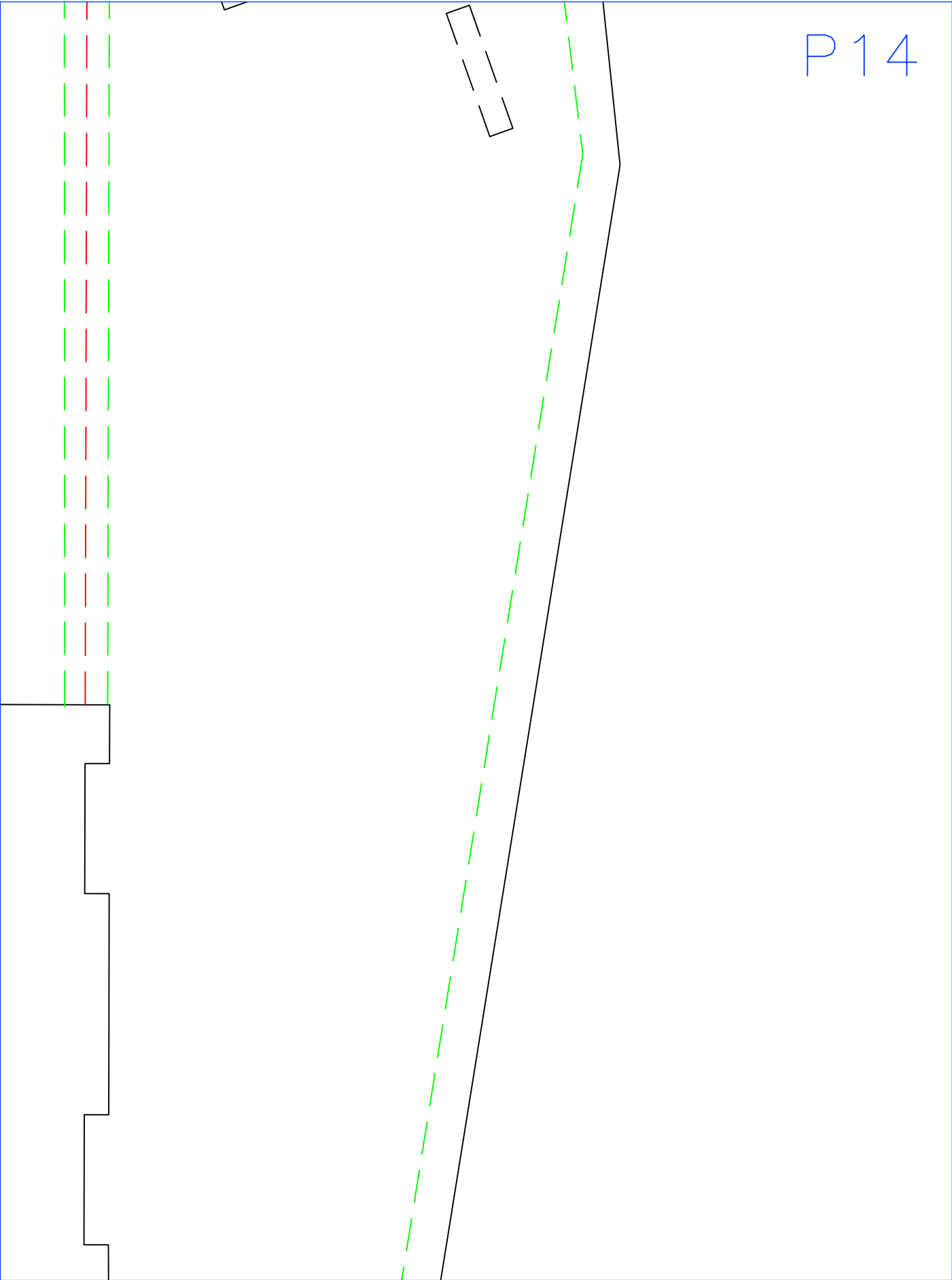
P12



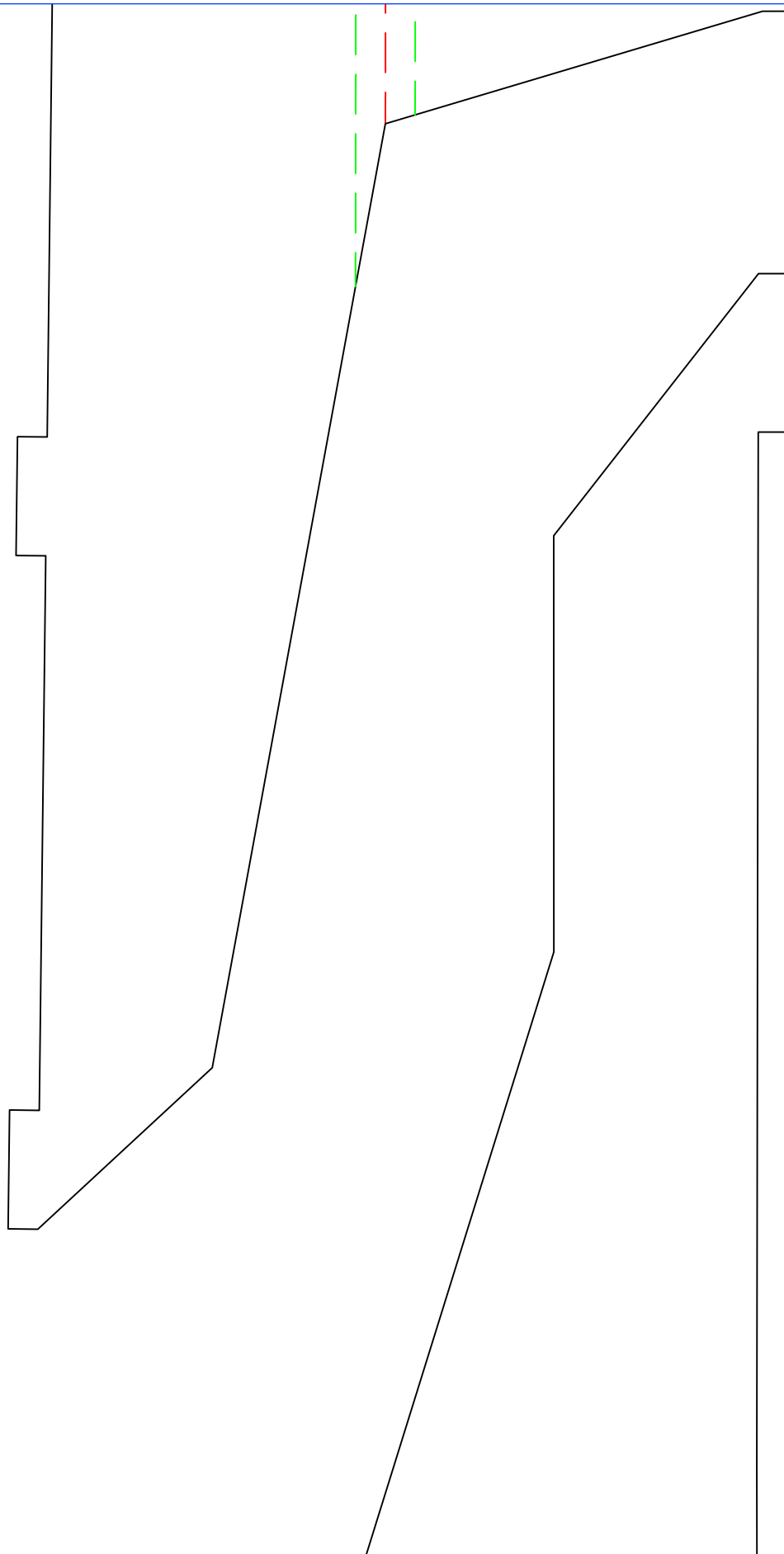
P13



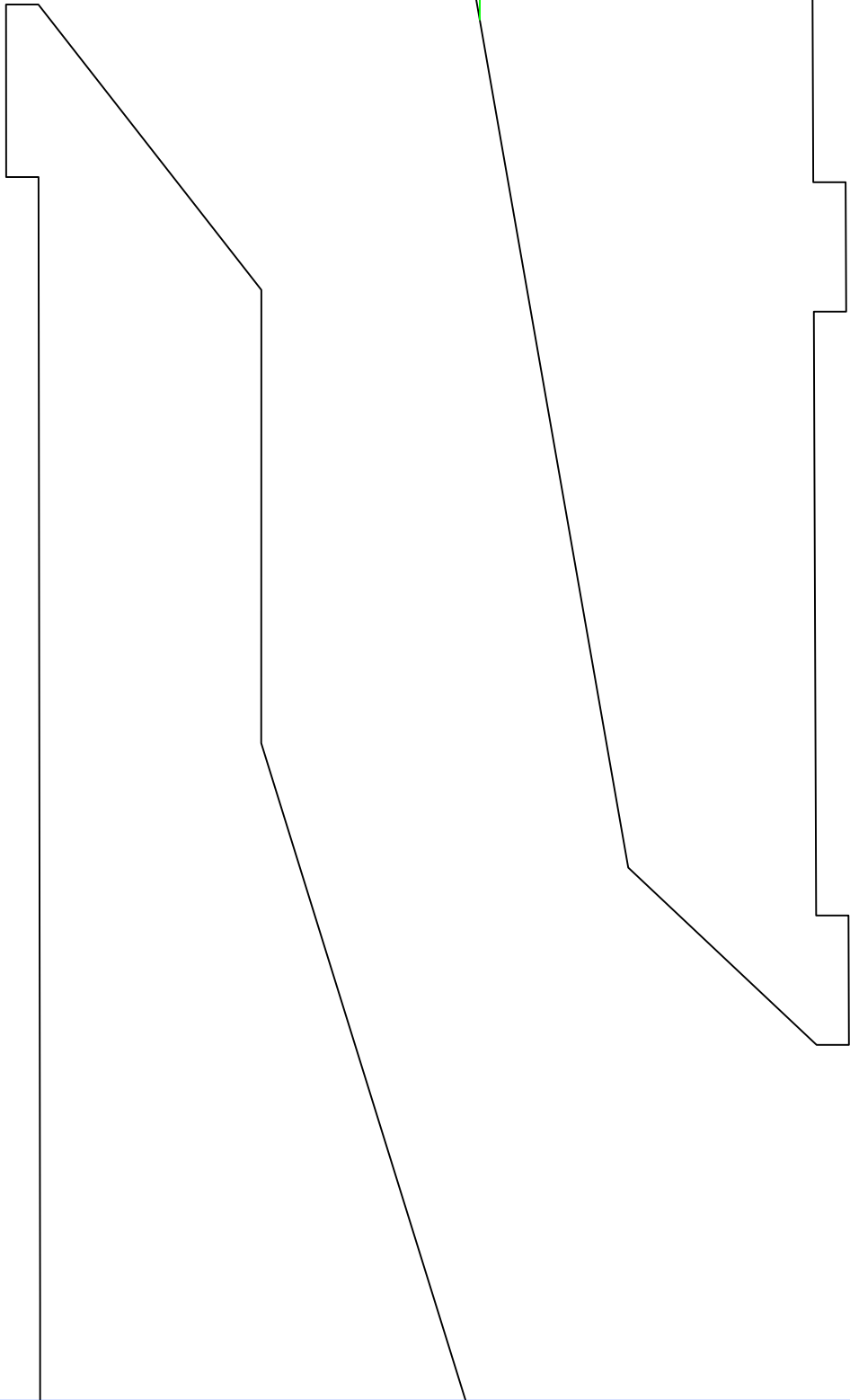
P14



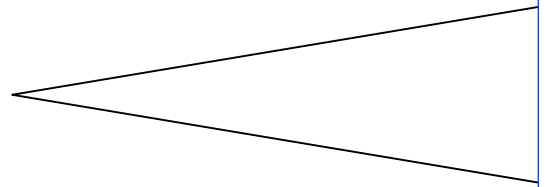
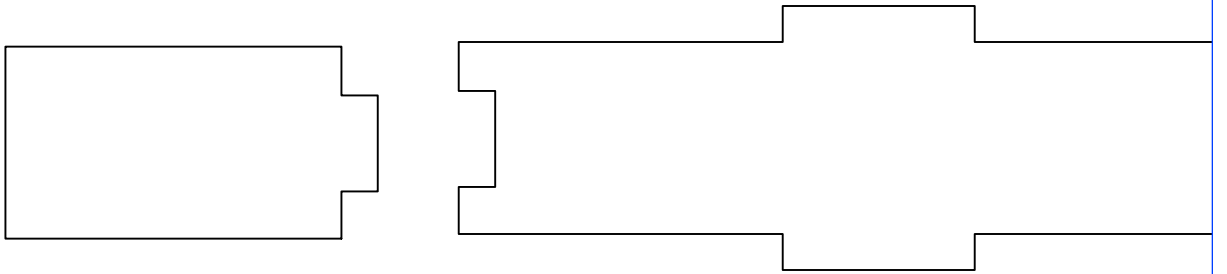
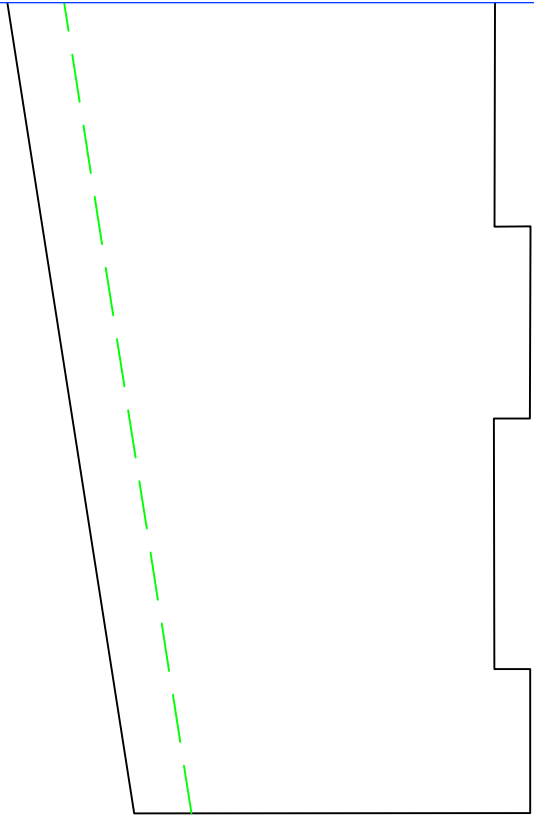
P15



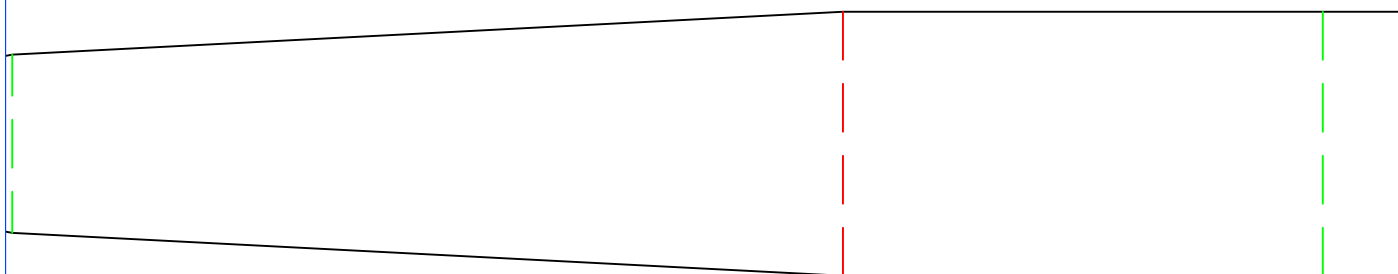
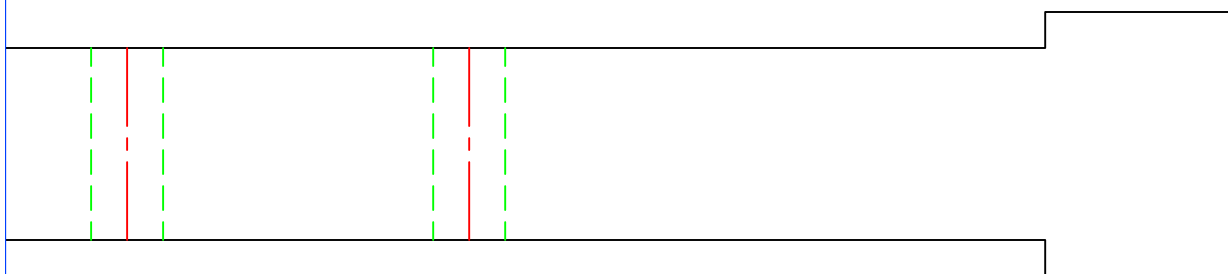
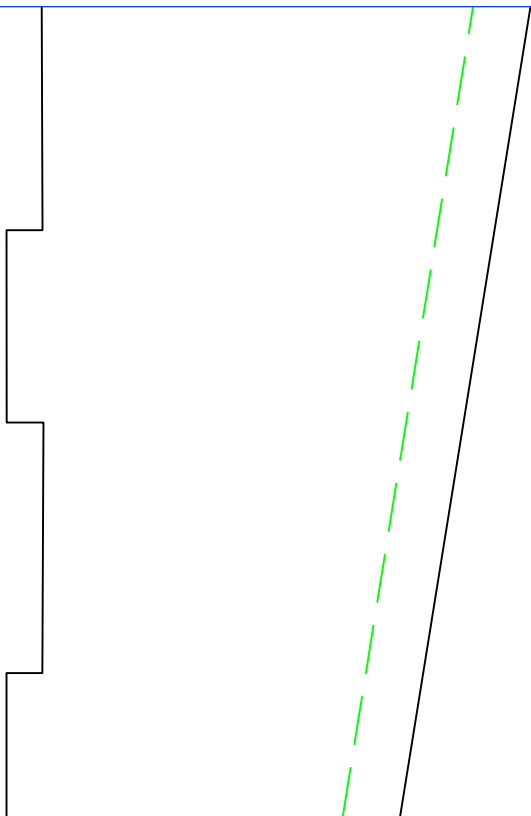
P16



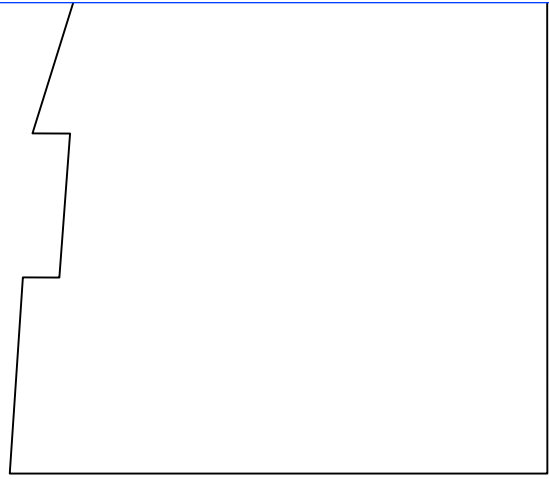
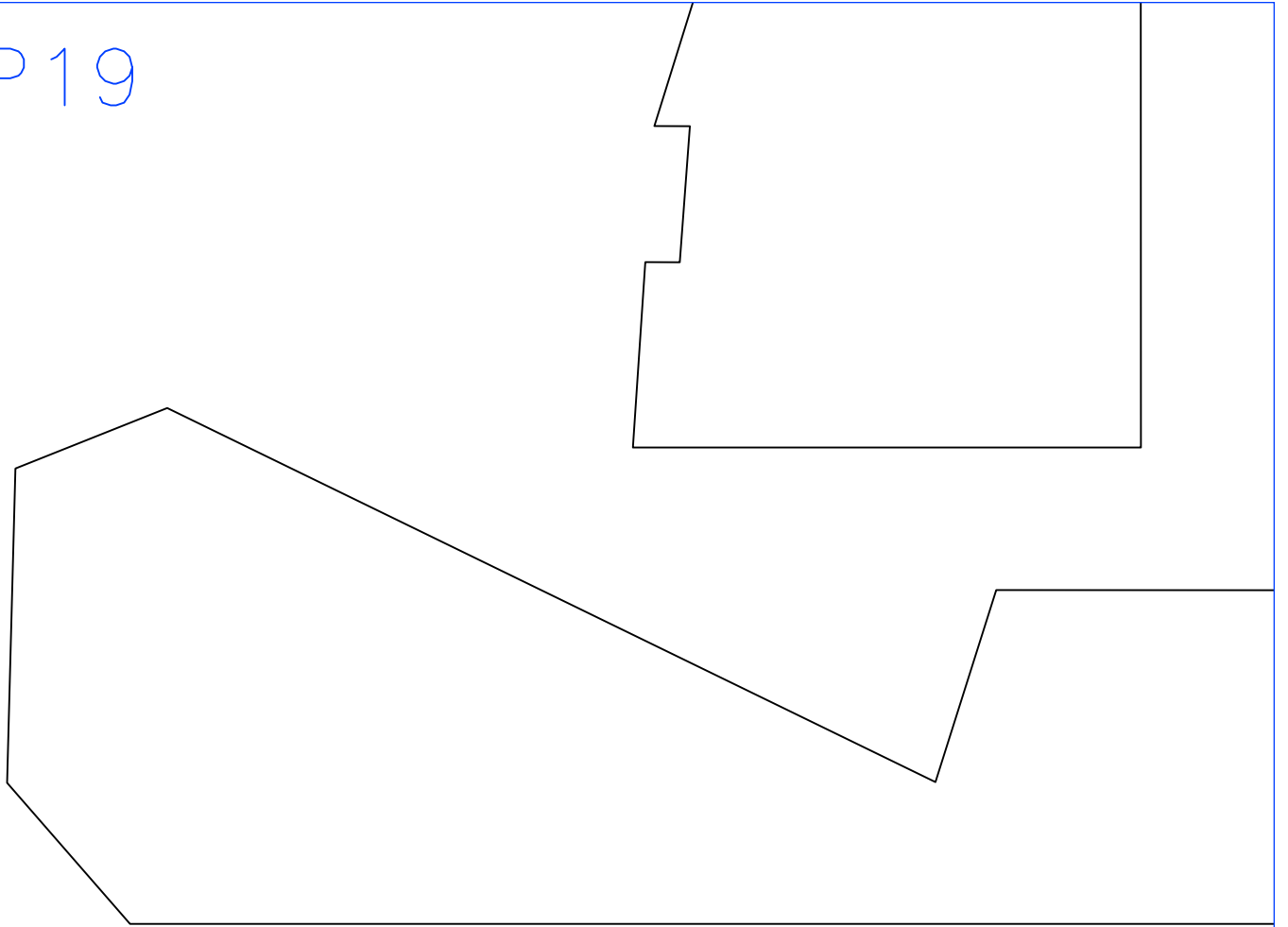
P17



P18



P19



P20

